

# Mat Products for Utility & Construction Industries

**Bridgewell Mats** is a producer and supplier of timber mats, composite mats, steel rig mats and hybrid wood/composite mats. Our strategically-located stocking locations throughout the United States and Canada provide efficient distribution hubs to help with freight and timely delivery for your project needs. Our offerings include new and used options for purchase, purchase with buyback and rental programs.

Whether your specific needs call for large or small orders for crane support, pipeline jobs, temporary road access, trestle bridges or other applications, we can provide the product that meets your unique specifications and criteria.

## WE OFFER:

### Timber Mats

- **Crane/Dragline Mats**
  - Up to 40-foot lengths
  - 8, 10, 12 inches thick
  - Hardwoods, Pine, Douglas Fir and Hemlock
  - Exposed bolts and/or cable
  - Wedges offered
  - Built to customer specifications
- **Laminated Mats**
  - 3-ply mats in 8'x14' and 8'x16'
  - Hardwoods, Douglas Fir, Pine, Hemlock
  - Cables or chains
  - Interlocking configurations available
  - Built to customer specifications

### Mammoth Mats (Steel Rig Mats)

- 3-10 feet wide and 10-60 feet long
- Steel (W6x15) reinforced glulam mats
- Wood options: Hardwoods, Aspen, Spruce, Pine, Douglas Fir, Hemlock
- Four lifting choker points/drain holes for pick up (top & bottom)
- Flat bar used to box in interior
- Gussets to provide additional support (24-30")

### RUGGED-ROAD™ Mats (Composite)

- 7.5'x14'x4.25"
- High-density poly ethylene (HDPE) mat with special fillers/additives
- Flanges on sides for connecting to others
- Half Sections available (7.5'x7.5')
- High strength, rigidity & impact resistant



**BRIDGEWELL**  
MATS

Bridgewell Mats  
PO Box 231101 | Tigard, OR 97281 | (503) 872-3403 | (800) 276-3404  
sales@bridgewellmats.com

# Mat Products for Utility & Construction Industries

## Hybrid Wood/Composite Mats

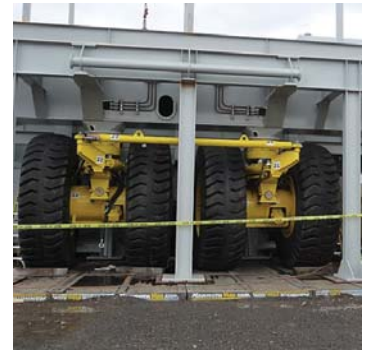
- 8'x16' standard size
- 3 ply laminated mat with ½"x4'x8' solid HDPE Sheets
- Hardwood or Southern Yellow Pine Timber Boards
- Diamond plate tread for better traction
- Cables or chains

## DURA-BASE Mats

- Durable 8x14 foot high-density polyethylene (HDPE) mats
- Strong, stable and uniform surface
- All weather performance

## Emtek™ Mats

- Engineered hardwood glue-laminated mats
- 3.5" to 18.5" thick options
- Design values available for each thickness



## SERVICES:

- Strategically-located inventory locations
- Competitive rates
- Personalized service
- Superior logistics expertise
- Direct truck or rail shipments nationwide
- CFR/CIF shipments worldwide
- Emergency and off-hour deliveries available
- Treated-wood disposal services offered
- Custom options available



**BRIDGEWELL**  
MATS

Bridgewell Mats  
PO Box 231101 | Tigard, OR 97281 | (503) 872-3403 | (800) 276-3404  
sales@bridgewellmats.com